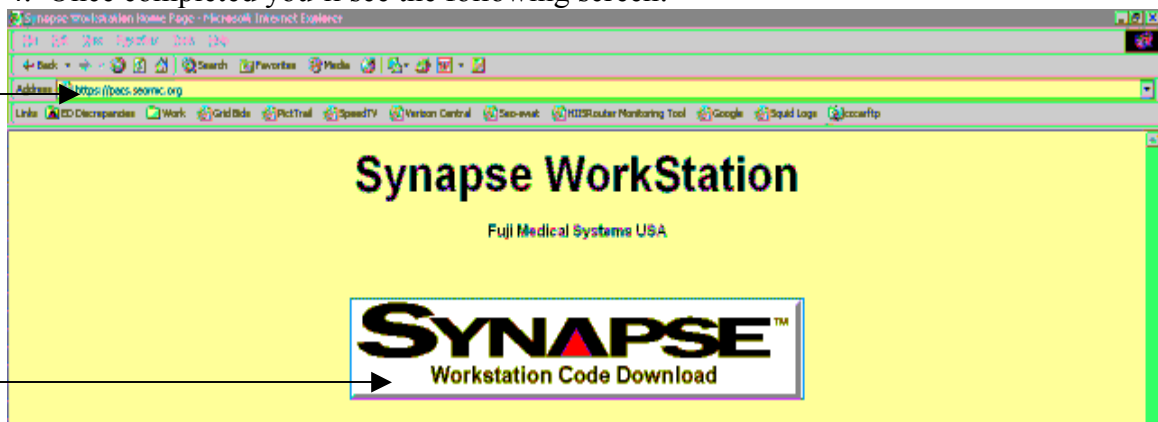

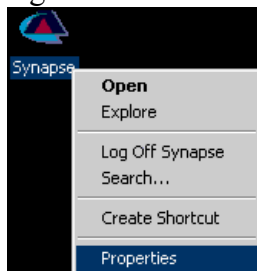


Installing and Using Synapse from Home with SSL

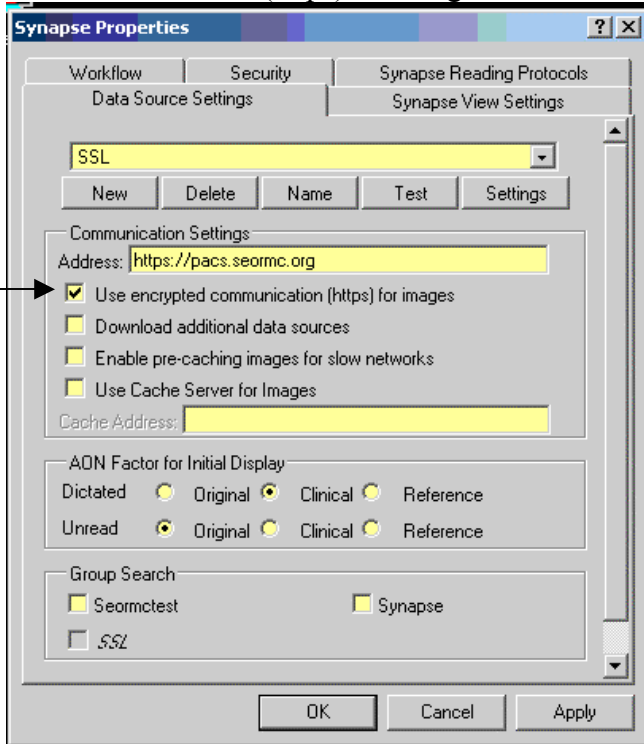
1. Open your web-browser... Usually Internet Explorer, but it will work with Firefox as well.
2. Enter the following address: <https://pacs.seormc.org>
3. **NOTE: Microsoft XP users:** You may be prompted to turn on your active-x control. You'll see a bar at the top of the screen and it will instruct you on how to turn on. Usually just right click and allow. You will also be prompted if it's okay to install. Click Install. Authenticate if prompted. (ghs***** & password). If running windows 2000: username, password, then ghs on bottom
4. Once completed you'll see the following screen:



5. Click on the white box named Synapse Workstation Code Download.
6. It will prompt saying the current version it's currently downloading and will later prompt saying when download/install is complete.
7. You can then close your web-browser and access Synapse from your desktop from the shortcut created: 
8. After the shortcut has been placed on your desktop, there's just one more thing. Right click on the shortcut and select properties:



9. Now with the screen pictured below, check mark the top box “Use Encrypted communication (https) for images:



10. Click OK

11. Now Double click on the Synapse Icon and launch Synapse.

12. Speeds and retrieval time will depend on some factors: #1. Your connection speeds, #2. Internet Traffic use, #3. Server load